

Respiratory Virus Report 2013

Figure 1. Positive Influenza Viruses (SNP) by Week for 2013

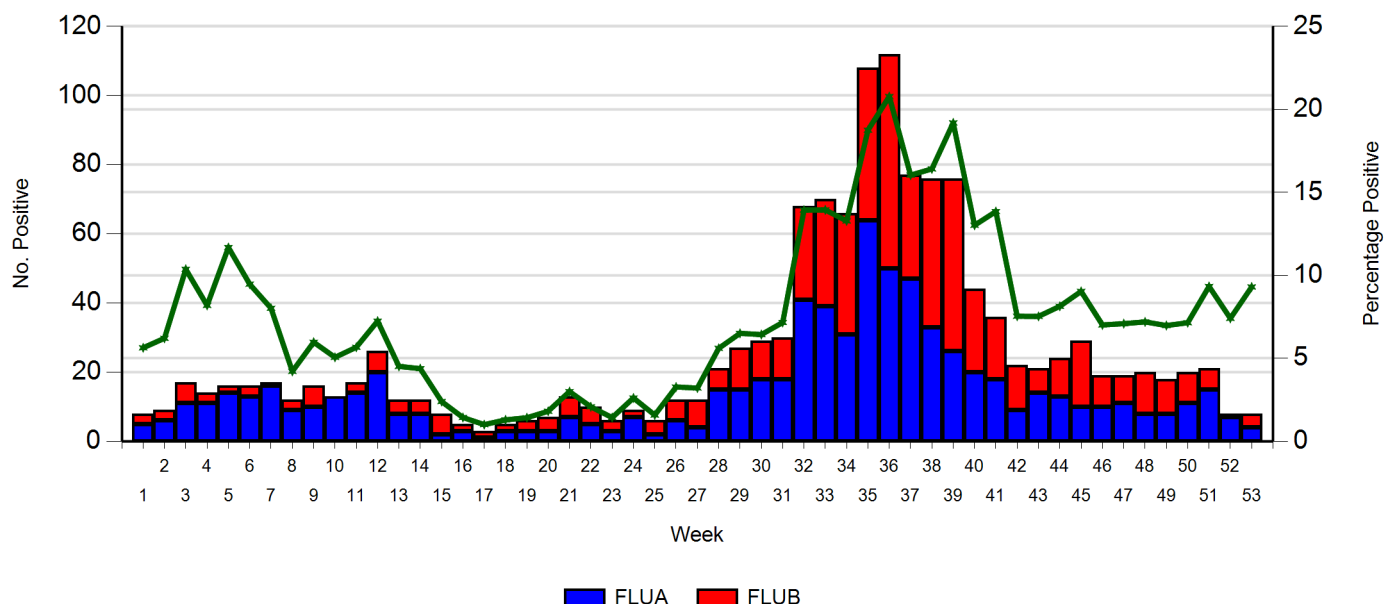


Table 1. Influenza Viruses by week for 2013

Week No.	1	2	3	4	5	6	7	8	9	10	11	12	13	14	15	16	17	18	19	20	21	22	23	24	25	26	27	28	29	30	31	32	33	34	35	36	37	38	39	40	41	42	43	44	45	46	47	48	49	50	51	52	53	Total
FLUA	5	6	11	11	14	13	16	9	10	13	14	20	8	8	2	3	1	3	3	3	7	5	3	7	2	6	4	15	15	18	18	41	39	31	64	50	47	33	26	20	18	9	14	13	10	10	11	8	8	11	15	7	4	762
FLUB	3	3	6	3	2	3	1	3	6	3	6	4	4	6	2	2	2	3	4	6	5	3	2	4	6	8	6	12	11	12	27	31	35	44	62	30	43	50	24	18	13	7	11	19	9	8	12	10	9	6	1	4	614	
%Pos	6	6	10	8	12	9	8	4	6	5	6	7	5	4	2	1	1	1	1	2	3	2	1	3	2	3	3	6	7	6	7	14	14	13	19	21	16	16	19	13	14	8	8	8	9	7	7	7	7	9	7	9		
Total	8	9	17	14	16	16	17	12	16	13	17	26	12	12	8	5	3	5	6	7	13	10	6	9	6	12	12	21	27	29	30	68	70	66	108	112	77	76	76	44	36	22	21	24	29	19	19	20	18	20	21	8	8	1376

Figure 2a. All Positive Respiratory Viruses (SNP) by Week for 2013 (Stacked Graph)

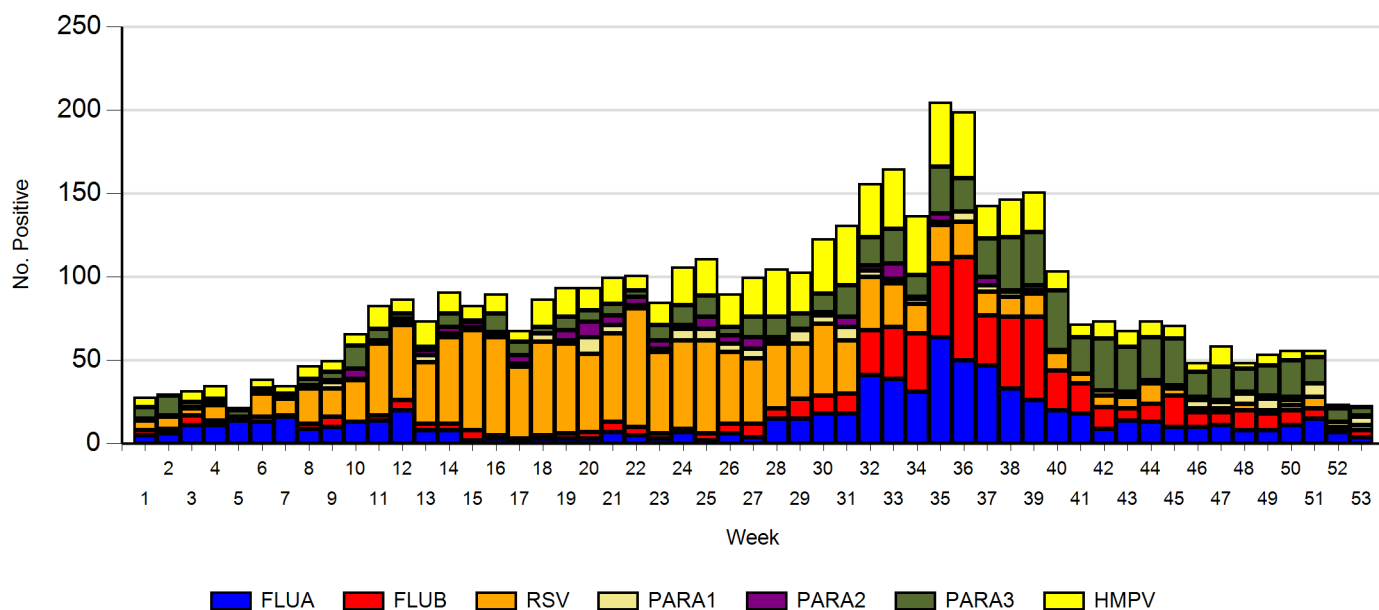


Figure 2b. All Respiratory Viruses (SNP) by Week for 2013 (Line Graph)

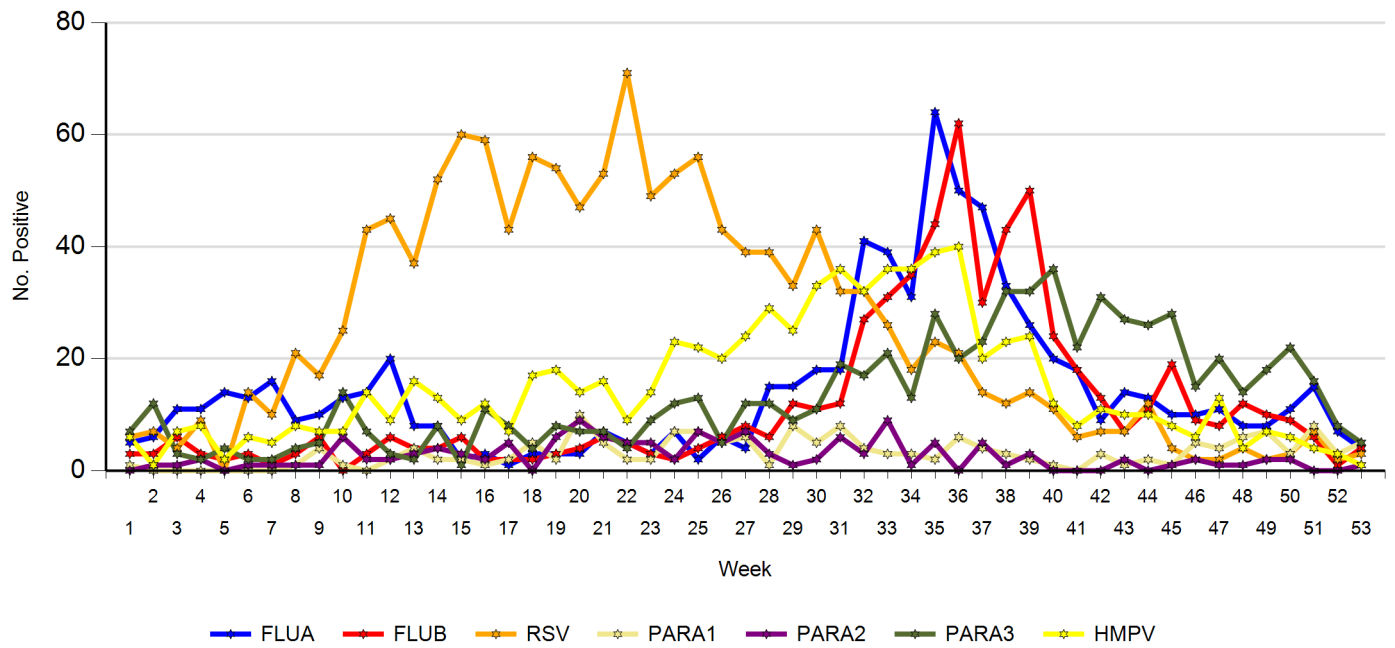


Figure 3. Positive Influenza viruses (SNP) by Age Group for 2013

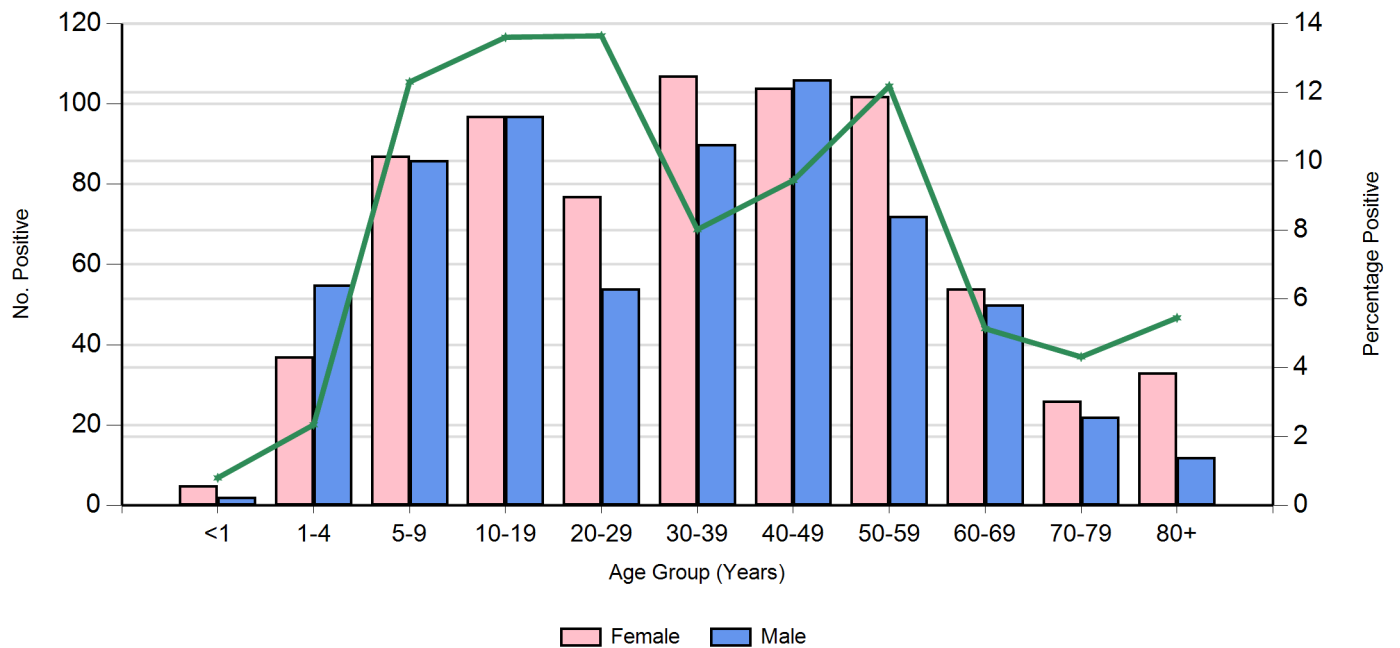


Figure 4. Positive RSV (SNP) by Age Group for 2013

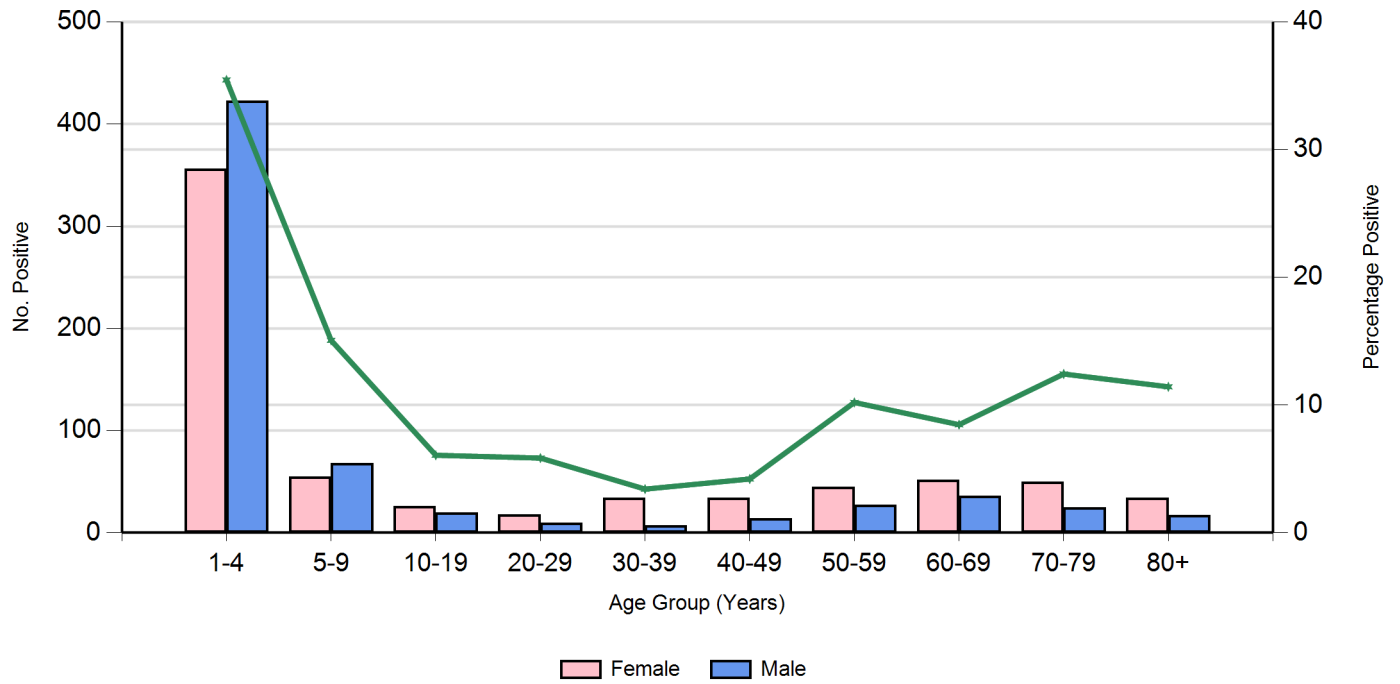


Figure 5. Positive Parainfluenza 1 (SNP) by Age Group for 2013

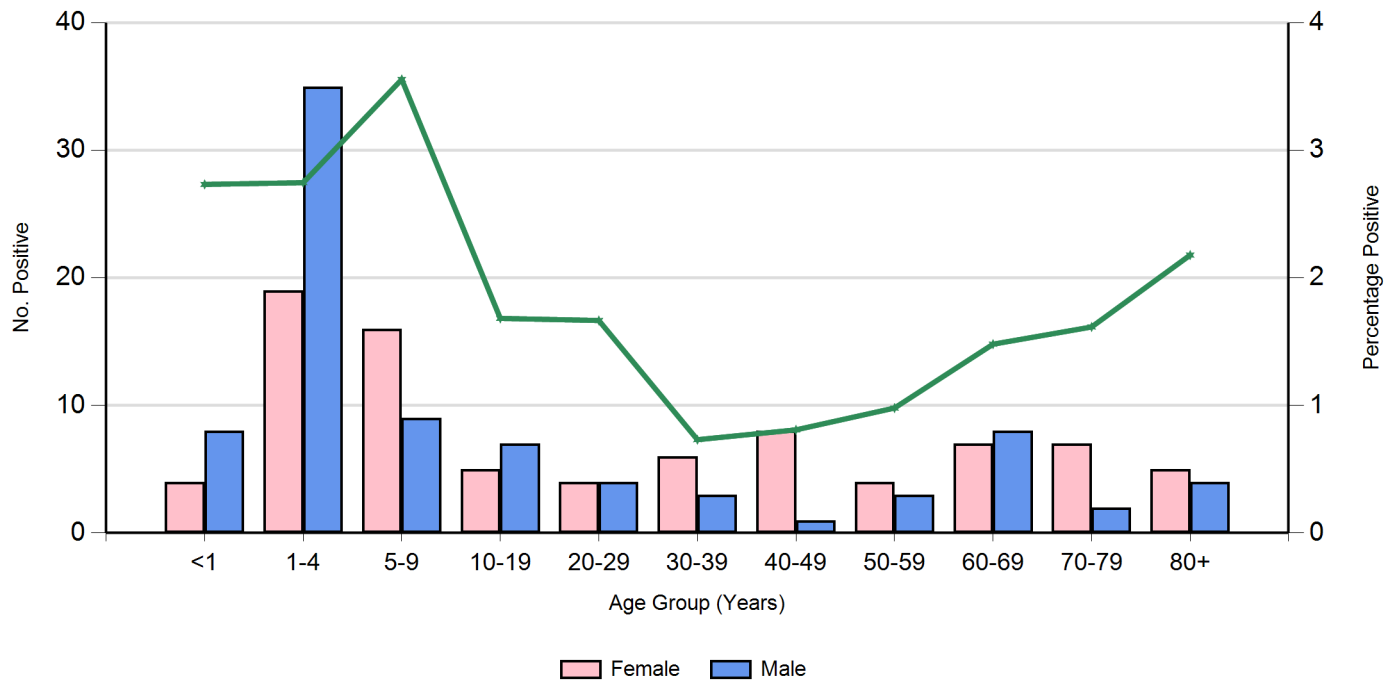


Figure 6. Positive Parainfluenza 2 (SNP) by Age Group for 2013

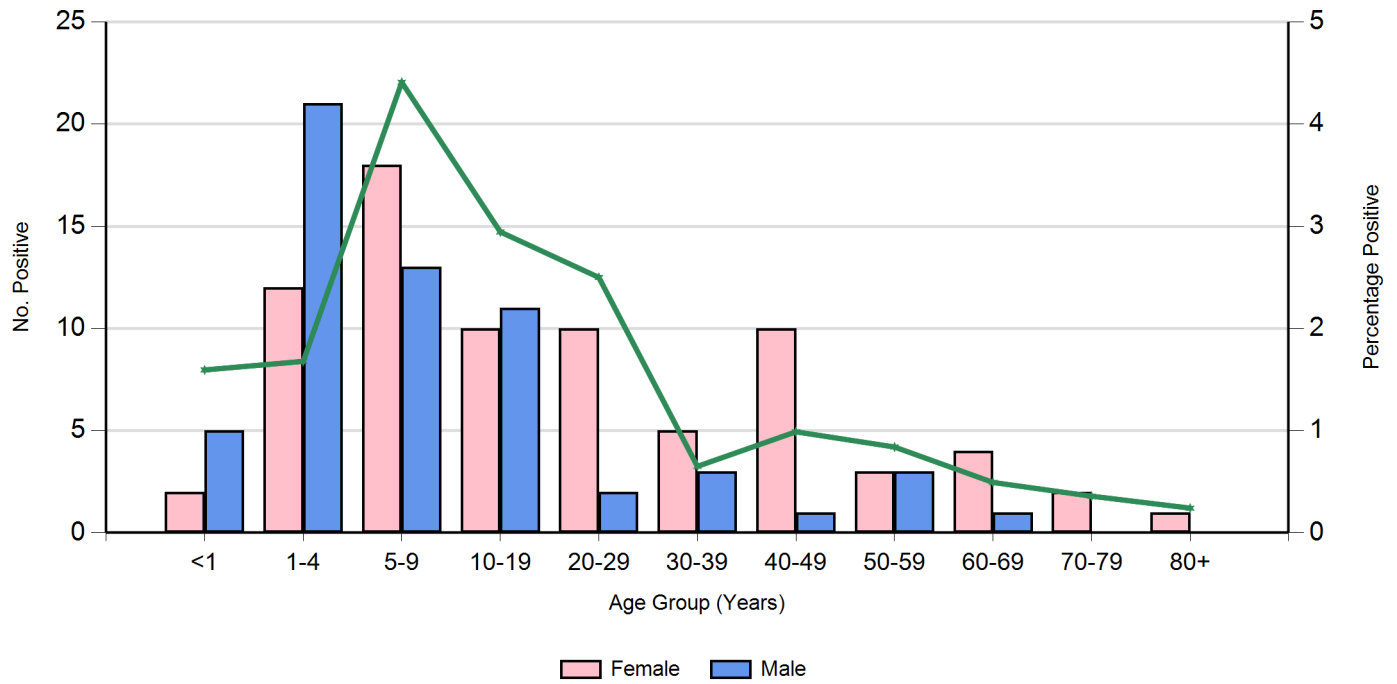


Figure 7. Positive Parainfluenza 3 (SNP) by Age Group for 2013

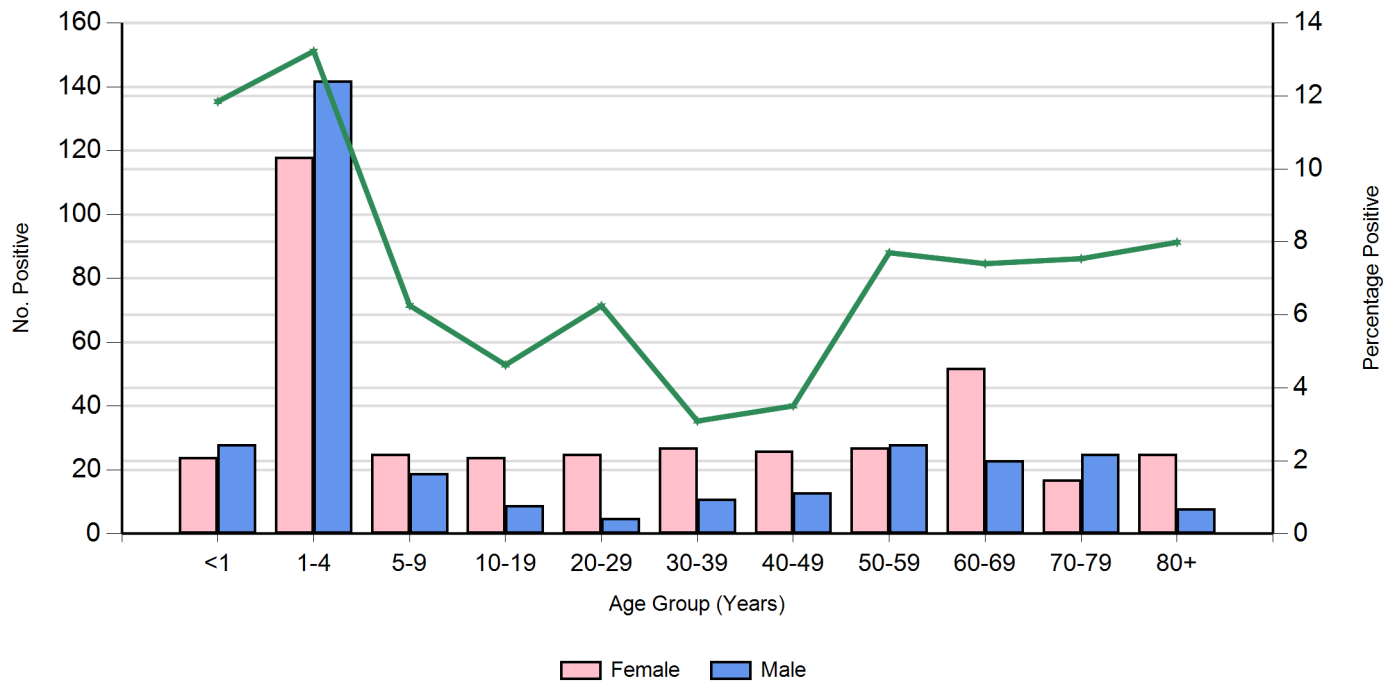


Figure 8. Positive Human Metapneumovirus (SNP) by Age Group for 2013

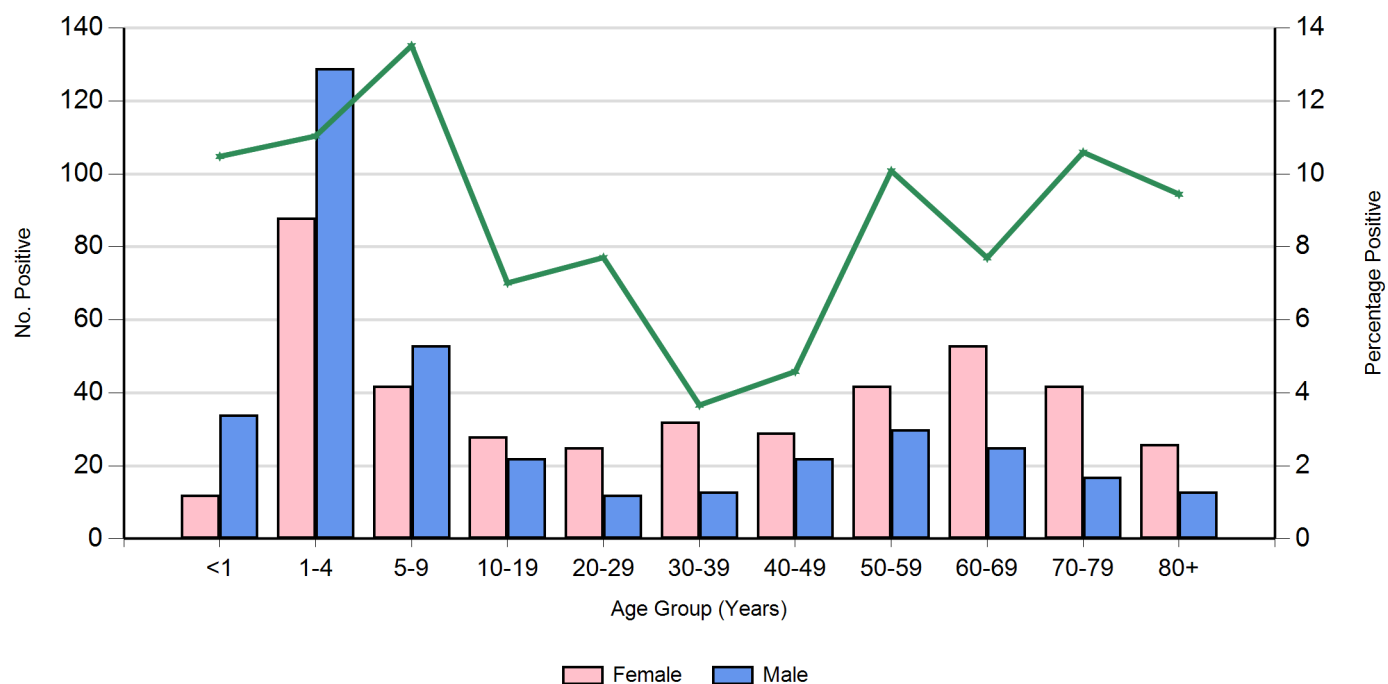


Table 2. Regions and Hospital and Health Services (HHS)

Tropical	Central	Southern
Torres and Cape	Central Queensland	Metro South
Cairns and Hinterland	Central West	Darling Downs
North West	Wide Bay	West Moreton
Townsville	Sunshine Coast	South West
Mackay	Metro North	Gold Coast

Figure 9. Influenza Viruses (SNP) by Week and HHS Region for 2013

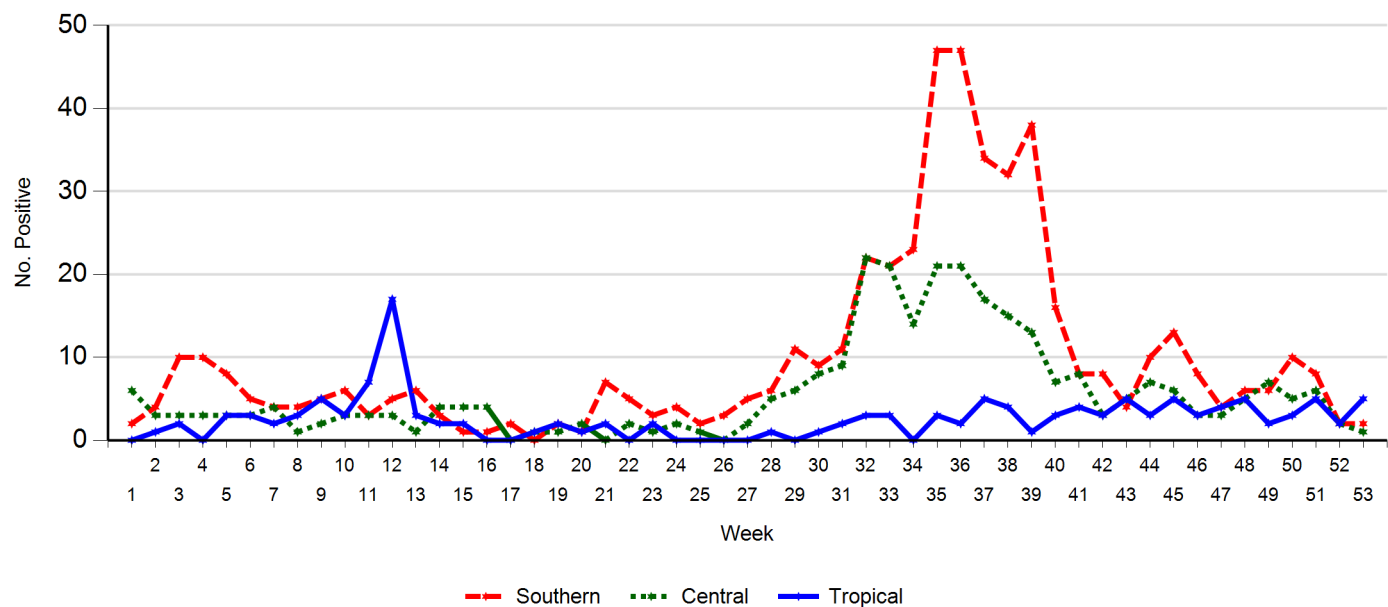


Figure 10. Positive RSV (SNP) by Week and HHS Region for 2013

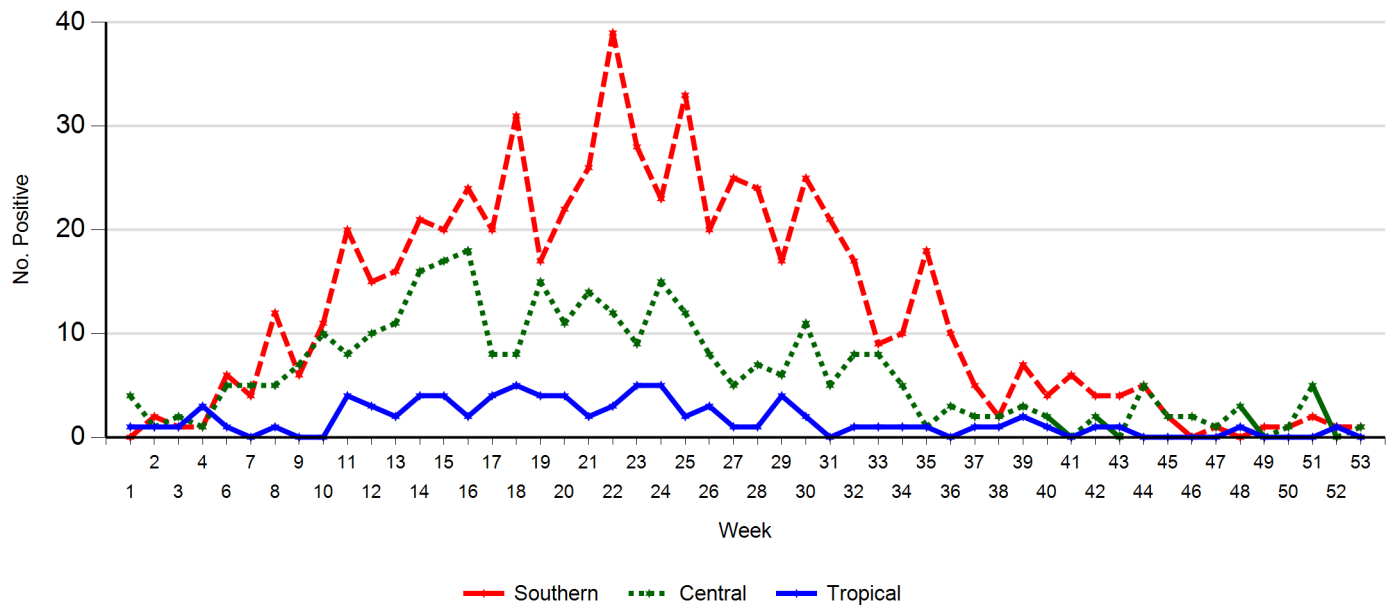


Figure 11. Positive Parainfluenza 1 (SNP) by Week and HHS Region for 2013

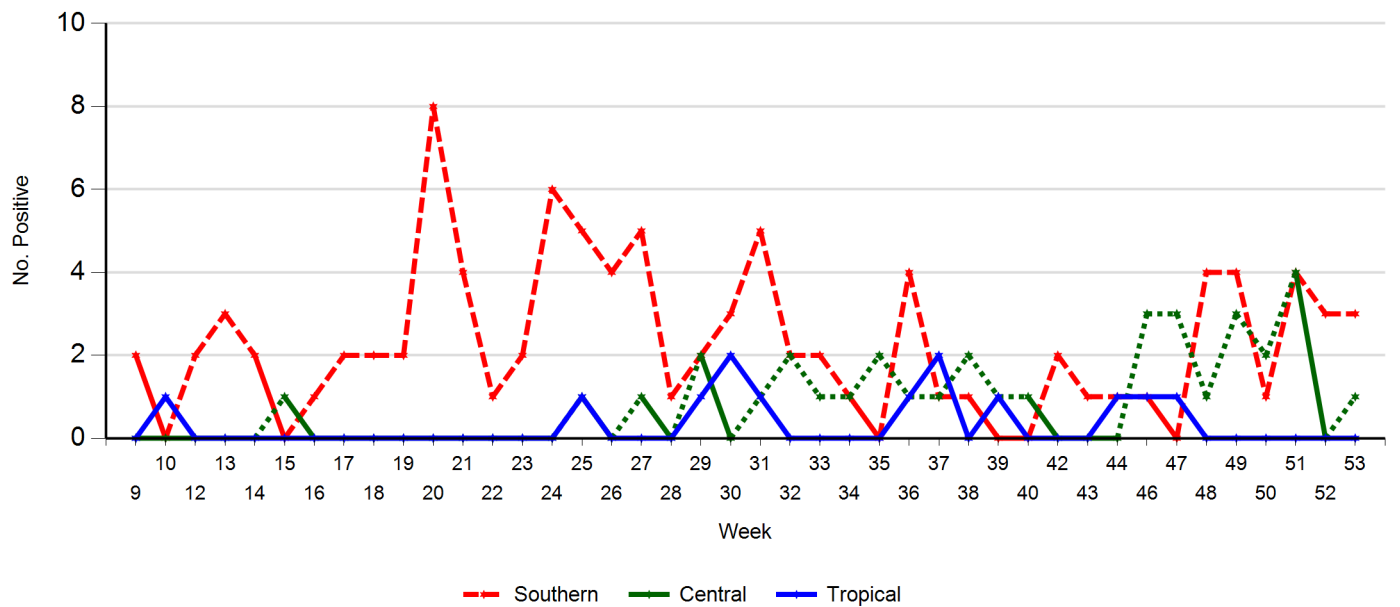


Figure 12. Positive Parainfluenza 2 (SNP) by Week and HHS Region for 2013

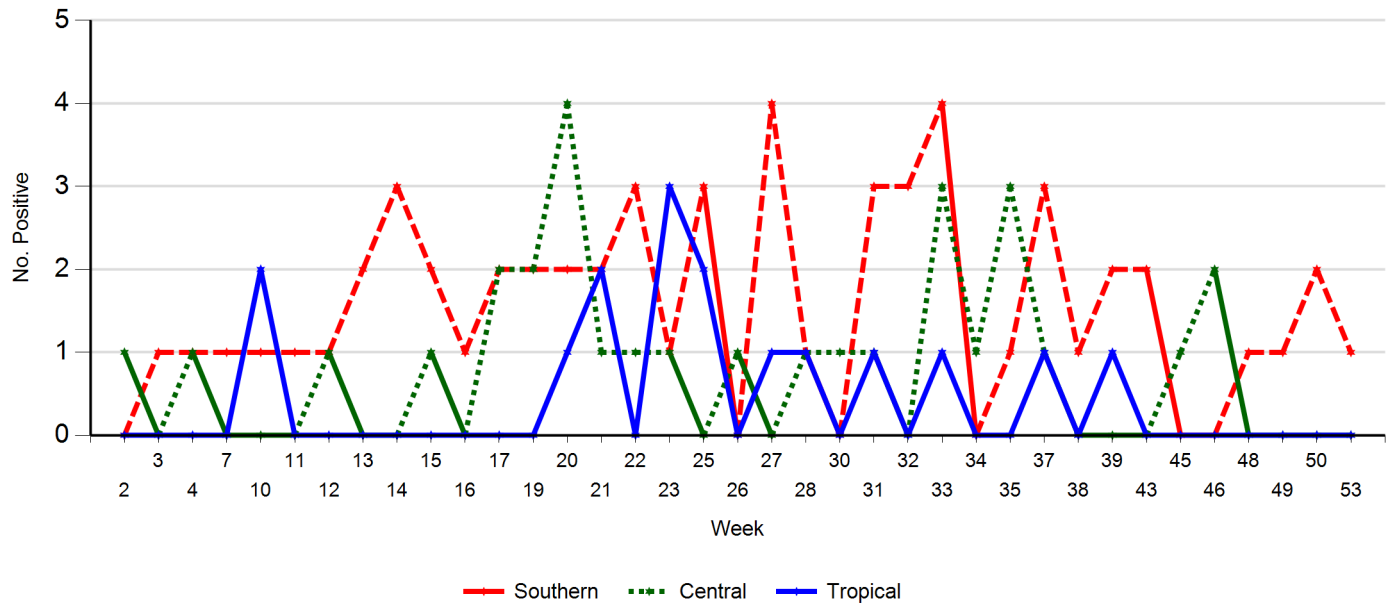


Figure 13. Positive Parainfluenza 3 (SNP) by Week and HHS Region for 2013

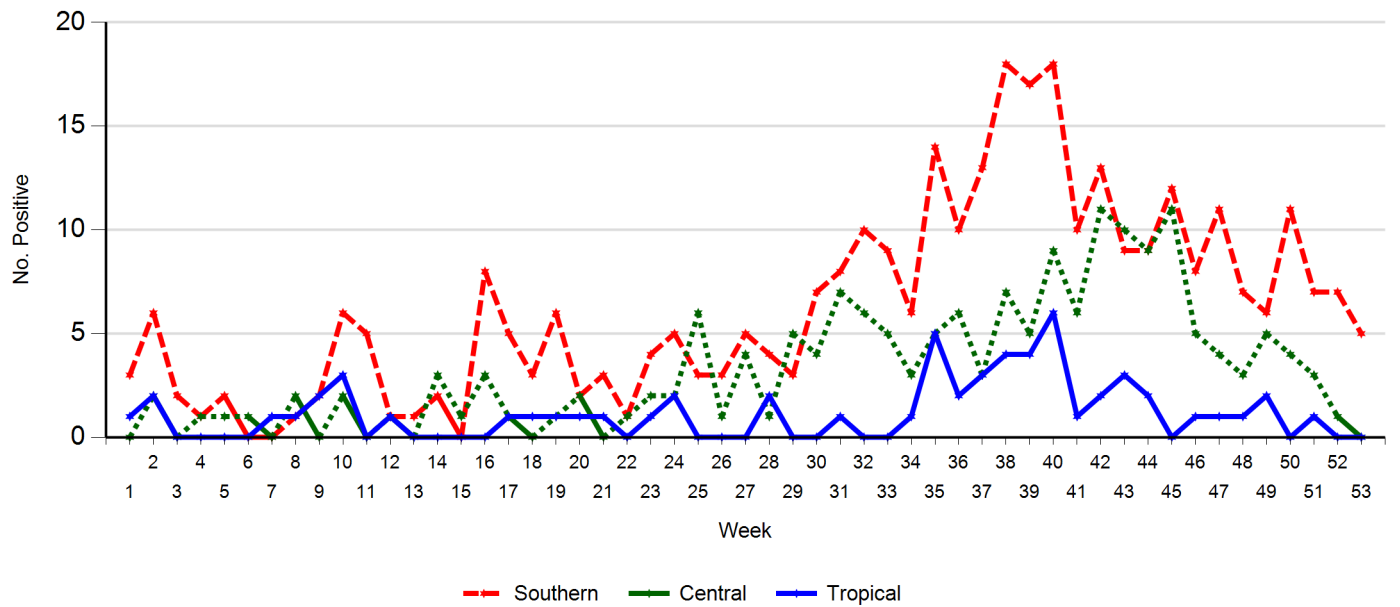
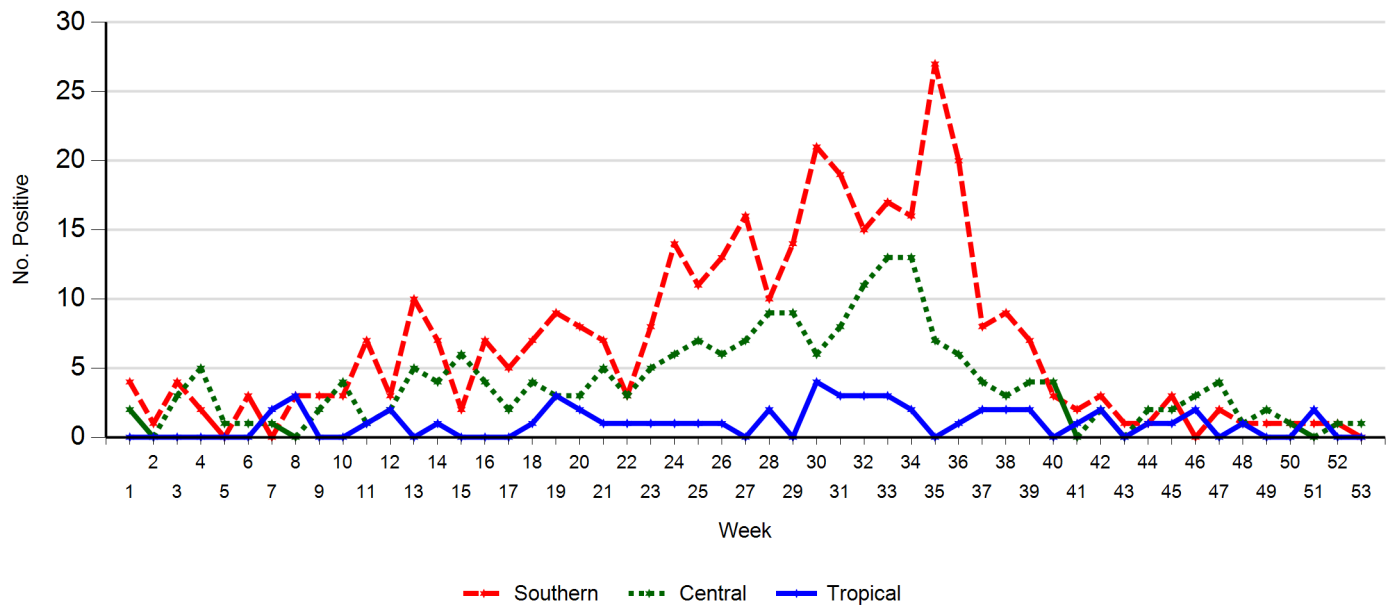


Figure 14. Positive Human Metapneumovirus (SNP) by Week and HHS Region for 2013



Cumulative Respiratory Virus Reports: Table of contents

Figure1: Weekly influenza notifications at SNP by type and percentage of positive tests by week of testing. Referred testing from all jurisdictions is included.

Table 1: Weekly notifications of influenza viruses by type (influenza A, influenza B) and week tested at SNP.

Figure 2a: Weekly notifications of all respiratory viruses by type (influenza A, influenza B, RSV, Parainfluenza 123, HMPV) tested at SNP - stacked. Referred testing from all jurisdictions is included.

Figure 2b: Weekly notifications of all respiratory viruses by type (influenza A, influenza B, RSV, Parainfluenza 123, HMPV) tested at SNP – line graph. Referred testing from all jurisdictions is included.

Figure 3: YTD Weekly notifications of influenza (FLUA&B) at SNP by age group and gender.

Figure 4: YTD Weekly notifications Respiratory Syncytial Virus (RSV) at SNP by age group and gender.

Figure 5: YTD Weekly notifications Parainfluenza 1 virus (PARA1) at SNP by age group and gender.

Figure 6: YTD Weekly notifications Parainfluenza 2 virus (PARA2) at SNP by age group and gender.

Figure 7: YTD Weekly notifications Parainfluenza 3 virus (PARA3) at SNP by age group and gender.

Figure 8: YTD Weekly notifications Human Metapneumovirus (HMPV) at SNP by age group and gender.

Table 2: Regions and Hospital and Health Services (residential) Queensland

Figure 9: Influenza notifications at SNP by week of testing and Region (Southern, Central, Tropical), Queensland only.

Figure 10: Respiratory Syncytial Virus (RSV) notifications at SNP by week of testing and Region (Southern, Central, Tropical), Queensland only.

Figure 11: Parainfluenza 1 virus (PARA1) at SNP by week of testing and Region (Southern, Central, Tropical), Queensland only.

Figure 12: Parainfluenza 2 virus (PARA2) at SNP by week of testing and Region (Southern, Central, Tropical), Queensland only.

Figure 13: Parainfluenza 3 virus (PARA3) at SNP by week of testing and Region (Southern, Central, Tropical), Queensland only.

Figure 14: Human Metapneumovirus (HMPV) at SNP by week of testing and Region (Southern, Central, Tropical), Queensland only.

@Sullivan Nicolaides Pathology (2014). If you wish to use this report or any data or graphs contained in the report you must seek the written permission of Sullivan Nicolaides Pathology. To request permission please send the following details and assurances to Marketing@snp.com.au

- *How the work will be used?*
- *Will the work be adapted?*
- *If it will be adapted or changed in any way, give specific details of the changes.*
- *Will it be included within other content, and if so what is the overall context, and what proportion of the overall work does the copied content represent.*
- *An assurance that the work will be properly attributed and will not be falsely attributed.*